


Biomic
Stain/Glaze
Aesthetic
Gum




“ Biomic developed by Aidite completely allows me to finish the zirconia restorations without porcelain buildup, through the simplest and fastest way. Achieving a restoration just like the natural teeth.
Whether Biomic is applied to zirconia or glass ceramic restorations, it can achieve an incredibly beautiful and natural effect. ”

Kang
CHIEN-MING KANG CDT



 Biomic Stain/Glaze
Aesthetic



 Biomic Stain/Glaze
Gum

Aidite
Aidite (Qinhuangdao) Technology Co.,Ltd.
Tel: +86-400-003-1233
Web: www.aidite.com
Email: info@aidite.com
VI-251216



www.aidite.com



Facebook

Aidite

 **Biomic Stain/Glaze**

*Biological mimicry:
The ultimate goal is to create simple bionic aesthetics.*

Everyone with a healthy and beautiful smile

High Aesthetics

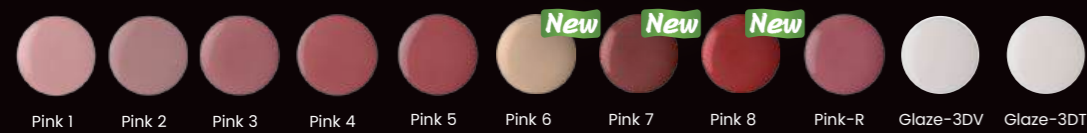
Indications: Zirconia Glass Ceramic

Sintering Chart:	Start temp.	Drying time	Heat rate	Start	End	Final temp.	Holding time	Slow cooling
	450°C	8min	55°C/min	600°C	729°C	730°C	1min	-

Biomic

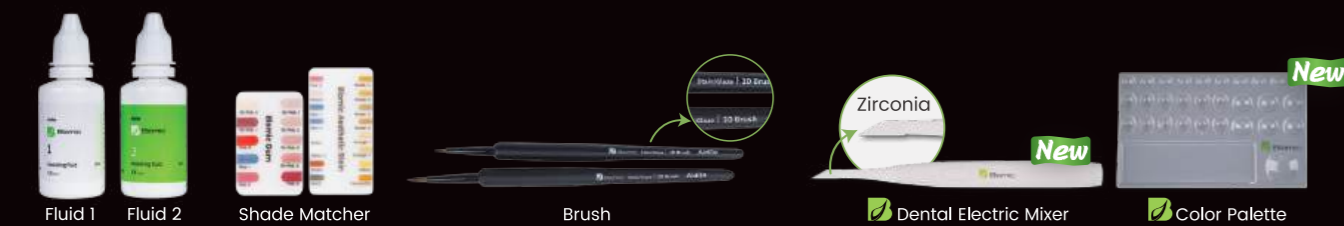


Biomic Gum



Use Instruction

Accessories



Simple to Use



Color concept

High Saturation



Hue



Warm area

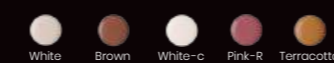


Cold area



Surface color enhancements

Crack line, calcifications, white spots, white band, proximal stain, gum illusion, halo effect.



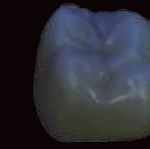
Mix with the main colors to produce life like results.



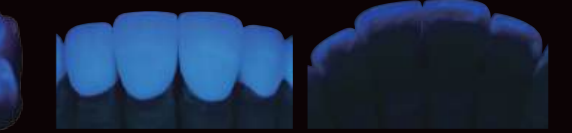
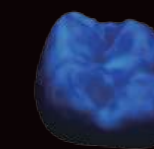
Emulate Aesthetics



Fluorescent Glaze Paste



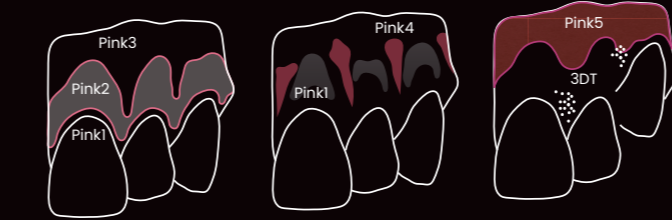
Effect of zirconia crown before applying Glaze-F under fluorescent lamp



Effect of zirconia crown after applying Glaze-F under fluorescent lamp



Main color area of gums, Intensive area of gums, Gum surface feature



3D-Transpa & 3D-Value

3D paste can be used to adjust the tooth shape or contact area.
3D-Value can improve the brightness.
3D-Transpa can be mixed with 2D paste to create new 3D effect layer.



Glaze 3DT +  = No limit